



Degree Day

FireStream Ascend Wholesale Module

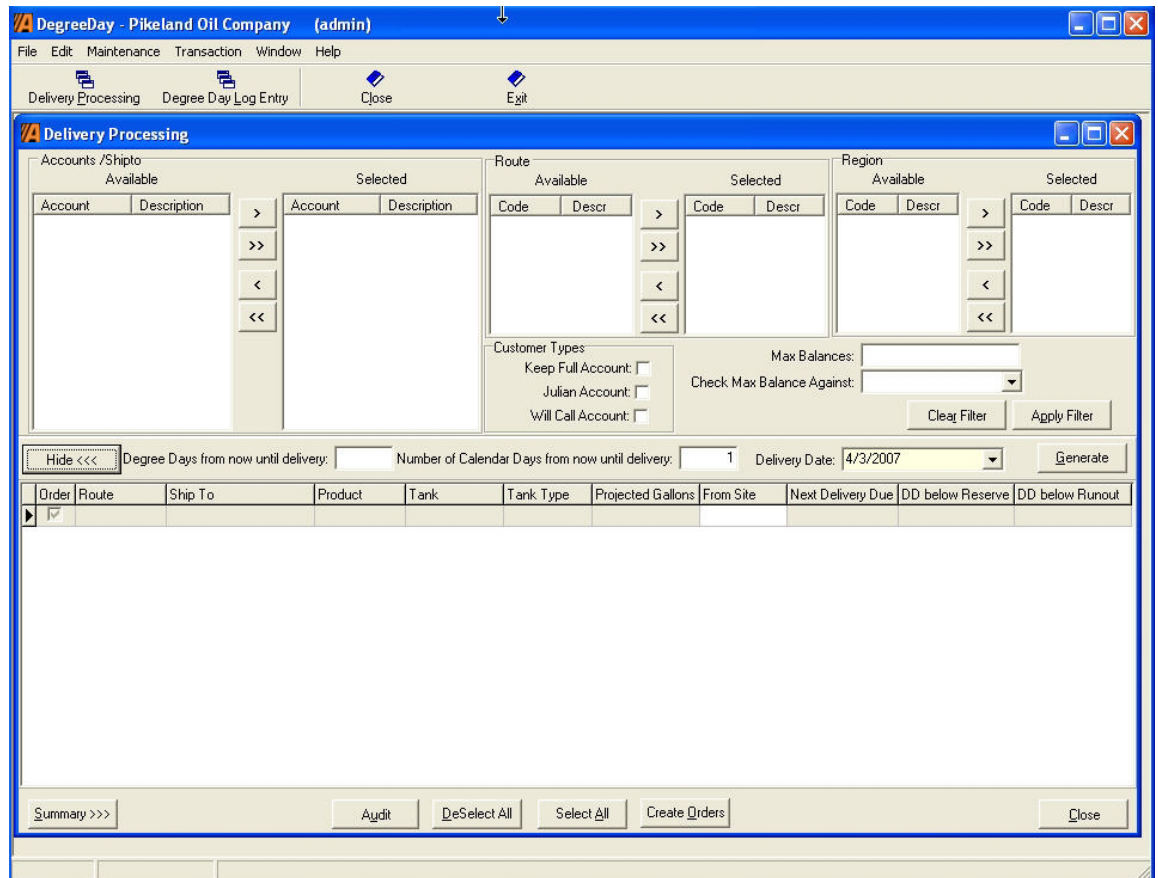
Degree Day keeps track of which customers need heating fuel, and when and how much they need delivered, so they never run out of fuel.

Manage your home heating oil business the profitable way while improving customer service with FireStream's Degree Day module. A must for the home heating oil industry, Degree Day handles all of your accounting and scheduling needs.

The Degree Day module uses weighted degree-days, computed on a regional basis, along with information tracked from previous deliveries to predict the demand for energy to heat homes, farms and businesses. Accurately forecasting when a customer will run out of fuel is important for two reasons. First, if a customer

cannot heat their home or business when needed, there can be serious consequences. Second, making emergency deliveries and frequent, smaller deliveries greatly increases the cost to the supplier.

But now it is possible to improve customer service and increase profits at the same time. Based on calculated depletion rates and prompt order creation, Degree Day keeps track of which customers need heating fuel, and when and how much they need delivered, so they never run out of fuel.





Information can be integrated with other FireStream modules for automatic invoicing, equal payment billing, profitability statements and inventory control.

Degree Day customers are classified as:

- Keep Full—The supplier performs special calculations to determine when the customer will need more fuel.
- Will Call—The customer calls to order fuel.
- Julian—Fuel delivery is scheduled every “n” days.

For Keep Full customers, the amount of fuel in each customer’s heating tank is monitored. Usage based on heating load (Degree Days entered for each region), the efficiency of the customer’s heating unit (K-factor) and any additional fuel usage from non-heating-related sources (hot water, fireplaces, etc) are all combined together to indicate when a customer needs additional fuel. Ideally, fuel is delivered on a just-in-time basis before a customer runs out. Efficiency factors are refined after each delivery.

Set up degree day company profiles, standard messages, heating types, tank types and routes. Create hot water gain adjustment tables and degree day shipto locations and tank profiles.

Daily logs maintain daily Degree Day entries for each Region/Zone. Users can create new degree-day records for any specified date up to and including the current date.

Set your own business rules, including:

- Historical Company Weight Factor— the weighting multiplier used for calculating adjusted K-factors.
- Reserve Factor—The percentage to keep in reserve.
- Variance Factor—The maximum deviation allowed between the gallons delivered and the estimated amount that was calculated for delivery.
- K-Factor Maximum Variance—The maximum percentage that K-factor can vary during each recalculation.
- Season Begin and End Date.
- Tolerance Factor—The number of degree-days that one-degree day entry can be greater or less than the previous days entry without creating a warning.
- Default Percentage for Rated Size— Percentage of actual tank size used to determine rated/usable tank size.

For more information about FireStream’s suite of wholesale and retail products, call us at (314) 434-4601 or access our Web site at www.firestreamww.com.