



# Cardlock

## FireStream Ascend Wholesale Module

Take charge of your electronic card-controlled fueling systems with Ascend Cardlock.

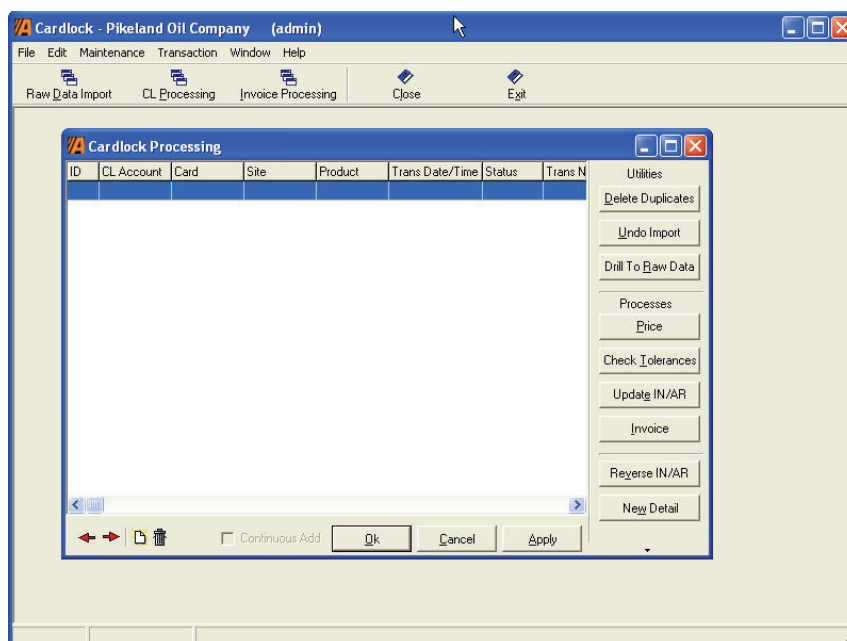
FireStream's Ascend Cardlock module is a transaction processing system designed with your needs in mind. Built on Microsoft SQL Server 2005 and fully integrated with FireStream's Ascend Accounts Receivable and Inventory modules, Cardlock keeps you informed and in control of your electronic unmanned fueling systems.

FireStream's Ascend Cardlock module provides you the flexibility you need to manage prices, taxes and credit levels, and print invoices.

It also provides a better solution for your customers by offering consistent billing, correct/timely invoices, quicker access to information, the option to email or fax statements, and web portal access.

### Features

- Supports unlimited cardlock sites.
- Automatically generates new card numbers based on network card blocks.
- Unique card numbers by account.
- Accounts may have unique billing cycles (daily, weekly, monthly, etc.)
- Quantity discounting (multiple options) based on specific account, site and/or product
- Invoice flexibility —Select invoice formats and print customer messages specific to account.
- Credit management—Manages customer credit limits and provides exporting to third party card processing systems.
- Handles transaction prices including or excluding taxes.



### Ascend

For more information about FireStream's suite of wholesale and retail products, call us at (314) 434-4601 or access our Web site at [www.firestreamwww.com](http://www.firestreamwww.com).



**Features, continued**

- Numerous Tolerance Checking options including high and low prices, target profit margins, maximum and minimum amounts [dollars, gallons, transactions], and credit limits.
- Reference Rack pricing options.
- Automatically generates vehicle numbers during raw data import.
- Reverse import files and invoices.
- Raw data file drill down.

**Cardlock Reports**

**CARDLOCK ACCOUNTS LIST**

**CARDLOCK TRANSACTION**—Shows all cardlock transaction data. Can choose to see domestic sales, foreign sales, remote sales, or all sales. Many sorting and grouping options as well.

**CARDLOCK USAGE REPORT**—Summarized or detailed transaction and tax information by Card, Vehicle, or Miscellaneous Entry with options for additional subtotals by Site or State.

**EXCISE TAX GALLONAGE REPORT**—In Accounts Receivable

**INVOICE REPRINT**

**RAW DATA FORMAT**—Shows how raw data formats were setup.

**RAW DATA IMPORT**—Shows transactions that contained errors when importing, due to improper formatting or missing information.

**SALES TAX REPORT**—In Accounts Receivable

**TOLERANCE CHECK**—List of cardlock transactions that have values outside the expected tolerance range.

**ENHANCED REPORTS**—Ascend Cardlock gives you the ability to view trends (gallons, sites, accounts, etc.), taxes (including exemptions), profit and loss, statement summaries, credit & numerous other transactional reporting.

All data also can be output using ISQL to create additional custom reports.

**Cardlock Interfaces**

FireStream Ascend Cardlock interfaces with numerous third party systems;

- Mannatec
- GasBoy
- CFN
- Pacific Pride
- Others

Ascend Cardlock interfaces with the Ascend General Ledger, Lawson General Ledger, and other smaller third party systems. In addition, Ascend Cardlock interfaces with numerous card authorization systems including 'internal' systems.